

SINUS 06NC78-RF

Special Inox joint for renovation of broken construction joints on industrial floors

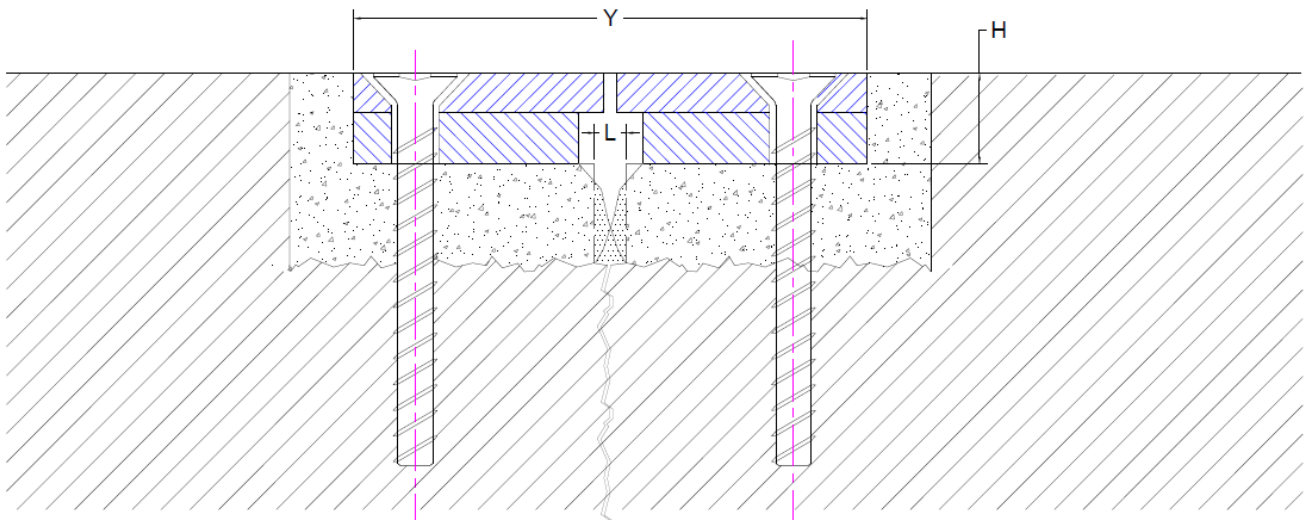


DESCRIPTION

Stainless steel AISI 304 flat profile with sinusoid dilatation gap for heavy loads, especially for reparation ready damaged concrete floors. Double protection of concrete plate edges. Joint for heavy loads for the renovation of industrial floors.




Standard bar length: 2,00 lm

MOUNTING



Art.	L mm*	H mm*	Y mm*
SINUS 06NC78-RF	5	14	80

*tolerance +/- 2mm

CAPACITY LOAD**		FIXING**
	Cars and trucks	Mounted using mechanical plugs.
	Forklifts with pneumatic wheel	
	Forklift trucks	

** The capacity load shown is only guaranteed if the mounting instructions have been correctly followed.