

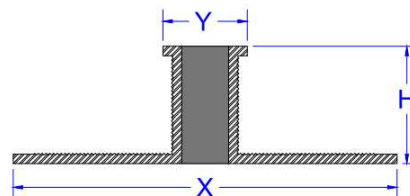
# Metal expansion joints


## Joint de fractionnement en métal

### DESCRIPTION / DESCRIPTION

Divider joints in metal with vulcanized EPDM interior for floors that are to be smoothed on-site.  
Joint de fractionnement en métal avec INTÉRIEUR en EPDM vulcanisé pour revêtements à polir.

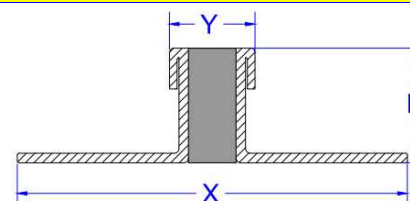
## A8 – ALL (ALUMINIUM)




Art.	H mm	Y mm	X mm	INSIDE COLOR/INTÉRIEUR	BAR LENGHT/LONGUER DES BARRES
A8-09-3ALL	3	9	41	black; grey; brown; beige; noir; gris; brun; beige; 	2,50 ml.
A8-09-4,5ALL	4,5				
A8-09-6ALL	6				
A8-09-8ALL	8				
A8-09-10ALL	10				
A8-09-12,5ALL	12,5				
A8-09-15ALL	15				

MINIMUM ORDER 300 ML FOR EACH COLOR

## A8 – ST (STEEL)



Art.	H mm	Y mm	X mm	INSIDE COLOR/INTÉRIEUR	BAR LENGHT/LONGUER DES BARRES
A8-09-3ST	3	9	41	black; grey; brown; beige; noir; gris; brun; beige; 	2,50 ml.
A8-09-4,5ST	4,5				
A8-09-6ST	6				
A8-09-8ST	8				
A8-09-10ST	10				
A8-09-11ST	11				
A8-09-12ST	12				
A8-09-15ST	15				

MINIMUM ORDER 300 ML FOR EACH COLOR

*This drawing is our property and can't be reproduced or transmitted to other persons without our authorization.*